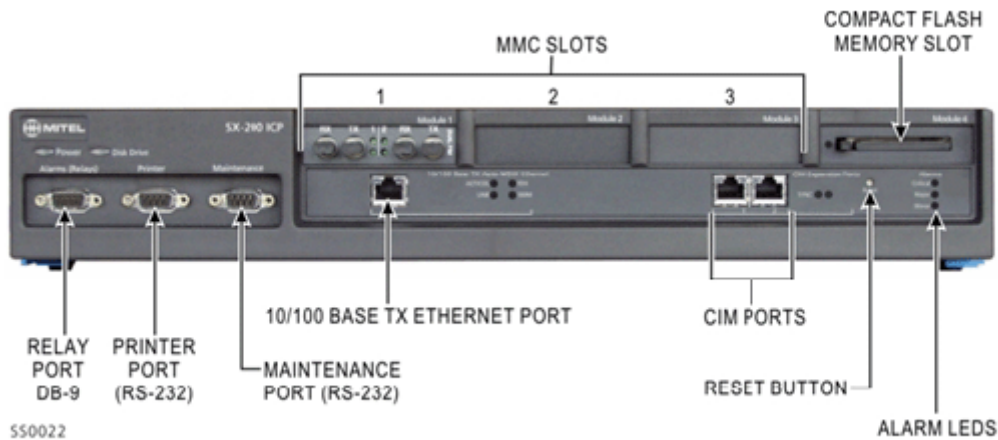


ICP QUICK SETUP

SECTION A: POWERING UP

1. Physical Description



Relay port for Night Bell, door opener, etc. (Tech Handbook, p. 368.)

Printer port: **50 foot maximum cable run**, TX pin 2, RX pin 3, Gnd pin 5.

Maintenance port: 9600, VT100 compatible. (Tech Handbook, p. 367)

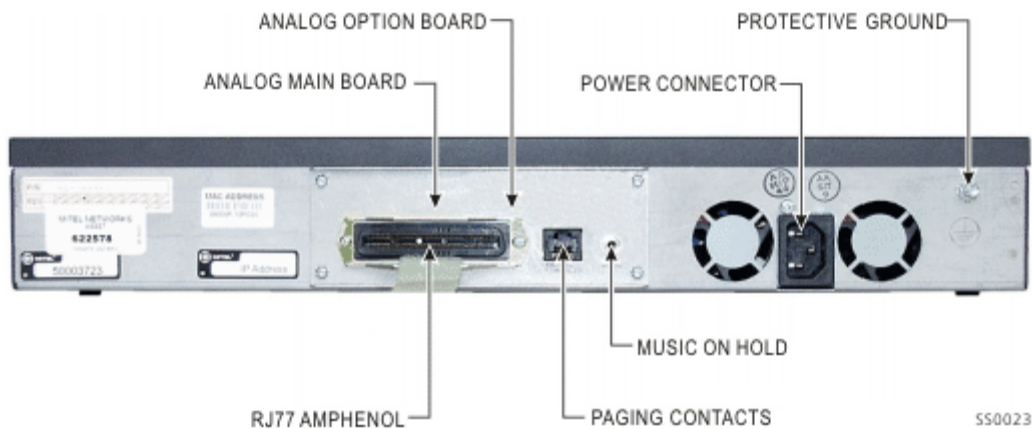
10/100 Port: Use crossover cable.

CIM Ports: for peripheral TDM cabinets, 2 and 3.

LED's for Critical, Major and Minor Alarms

External Flash card reader:

LED amber--do not remove card; LED green--OK to remove card.



Amphenol: provides pinout for devices on Analog Main Board

Table: Analog Main Board / Analog Option Board Tip/Ring Assignments (MX Controller)

Note: The Analog Main Board / Analog Option Board comprise the IP bay for the controller. By default, the IP bay is bay number 1.

Pins	Pairs	Circuit type	Bay/Slot/Circuit	Comments
1/26	W-BL / BL-W	ONS/CLASS	1/13/3	Default Extension numbers: 200
2/27	W-O / O-W	ONS/CLASS	1/13/4	Default Extension number: 201
3/28	W-G / G-W	ONS/CLASS	1/13/5	Available as upgrade option
4/29	W-BR / BR-W	ONS/CLASS	1/13/6	Available as upgrade option
5/30	NOT USED			
6/31	R-BL / BL-R	DNIC	1/13/1	Sub Attendant Default Extension number: 199
7/32	R-O / O-R	DNIC	1/13/2	SUPERCONSOLE 1000 Default Extension number: 198
8/33 - 10/35	NOT USED			
11/36 - 16/41	BK-BL / BL-BK	LS/CLASS	1/13/7 - 1/13/12	Trunks at locations 1/13/7 and 1/13/8 are the System Fail Transfer trunks. They connect to ONS phones located at 1/13/3 and 1/13/4 respectively.
17/42 - 22/47	Y-O / O-Y	LS/CLASS	1/13/13 - 1/13/18	Available as upgrade option
48/23 - 50/25	NOT USED			

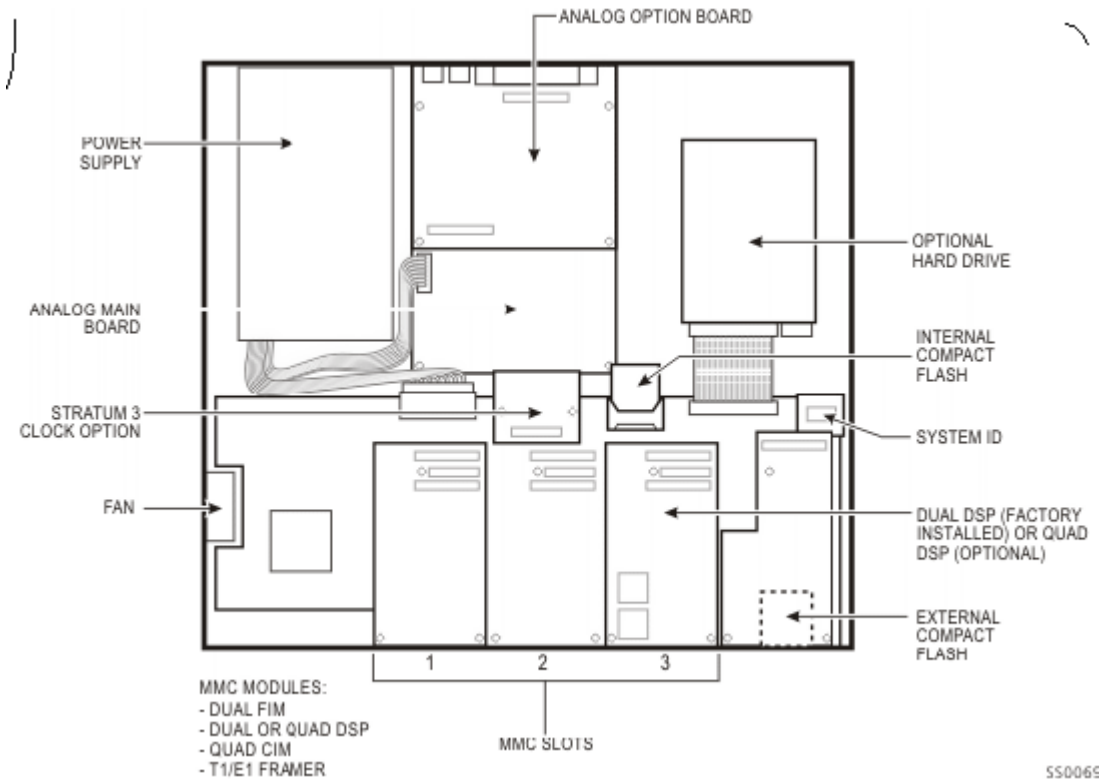
Paging Contacts: Back Panel RJ-45 Connector (Tech Handbook, p. 368)

- Pin 1 Contact A, Normally Closed
- Pin 2 Common

- Pin 3 Contact B, Normally Open
- Pin 4 Wire 1, Audio
- Pin 5 Wire 2, Audio
- Pins 6-8 Unused

MOH: 1/8" phono plug, 10-500 mVrms, 50VDC maximum

Power Connector. **There is NO On/Off Switch.**



MMC Modules

Positions 1 and 2 can accommodate the CIM or FIM modules, or the T1/E1 Frammer Module.

Position 3 can only hold the dual or quad DSP, and position 2 can hold an additional dual or quad DSP module.

Hard Drive and Internal Flash Card

If shipped direct from Mitel to you, the system may have both the hard drive and the Internal Compact Flash card installed. Remove the cover from the controller.

If there is a hard drive and a CompactFlash card installed, remove the CompactFlash card, and replace the cover.

Keep the CompactFlash card for future upgrades. Do not reinsert the flash card into the ICP unless directed to do so by Technical Support.

SECTION B: NEW FORMS & PROCEDURES

MOC & Password: In Form 4, there is a new option called "MOC" which is accessed by Esc. 9. After choosing this option, enter the 36 digit number found at the top of the MOSS sheet, and then enter the Password and press Enter twice. This will automatically change all the MOSS options to what you find on the MOSS sheet.

Form 47: IP Networking, Subform 01 System IP. This is where you define the IP address, username and password for the FTP server. This should be the only changes made in this form, and the FTP username and password must match those programmed in the FTP server.

Form 49: Voice Mail Options. Many of these are controlled by MOSS options. Also the options that were set in Telephone Administration of an Express Messenger are controlled here through CDE.

Form 50: Mailboxes. The default and premier databases dictate 3 digit mailbox numbers (and extension numbers).

Form 51: Voice Mail Distribution Lists: This form is used to set up distribution lists for system-wide use.

Form 52: Email. This form is used to set up e-mail notification of appropriate personnel in response to alarm level changes and 911 emergency calls.

Form 53: Bay Location Assignment. This form is used to assign bay numbers to connections on the SX-200 ICP. Each connection requires a bay number before the device that it connects to the controller can be programmed in Form 01.

Form 54: Calling Party Number. The Calling Party Number (CPN) substitution feature provides calling party identification for outgoing calls for purposes of network identification and call back.

Form 55: Digit Translation Table. This form designates where calls received by Direct Inward Dial trunks will route based on Day Service, Night1 Service, and Night2 Service.

SECTION C: FTP SERVER

A database backup via HyperTerminal or other communication software will not be complete. FTP backup is required to save all programming and voice mail messages. Guild FTP is downloadable at no cost from www.guildftpd.com.

Once GuildFTP is installed on an Ethernet configured notebook computer, it must be configured to function properly. Follow these steps.

- On your PC, under the root directory (c:\) create a new folder and name it ftproot.
- Open GuildFTP.
- Right click on the System Icon on upper left of window.
- Select "Add Group" name the group "upload".
- Right click on Upload Icon.
- Select "Add User"
- Name the user "ftp"
- Assign a password perhaps @ (FTP and @ are the default values in Form 47)
- Click on the "Advanced" button and confirm
- Click on the "Administrator" radio button
- Click on "OK"
- Highlight FTP under Group
- Go to Paths in the third window on the right and Right click on C:\ftproot
- Click on Edit Path and add all 6 attributes.
- The Local Path should appear as C:\ftproot, Attributes RWADCL.

Ensure that the IP information is set up correctly on the notebook, including the subnet mask and static IP. The notebook must be on the same subnet as the ICP.

See the Tech Handbook pages 75 and 203.

SECTION D: SECURE TELNET

Remote access requires a secure telnet connection. Mitel Secure Telnet is supplied on the Mitel CD packed with each ICP system, in the folder Tools. Once installed on your laptop, you can access Maintenance/CDE by typing "open 192.168.1.2 2000" from the secure telnet prompt.

Log into secure telnet using login name "installer" and default password "1000", then you can log into switch in the usual manner.

See the Tech Handbook, pages 83 and 221.

It is unnecessary to log out of CDE to gain access to Maintenance. From the main menu of CDE, Esc 4 is the option "To Maint"; and from Maintenance main menu, option 9 is "TO CDE". In addition, each form is labeled at the top of the screen with the form number and name.

SECTION E: Programming via Web Browser

The PC to be used must have pop-up blocker disabled, and must have Sun Java plugin version 1.5 or later installed (available from www.java.com/en/download/manual.jsp).

The address to put in the toolbar is: [HTTPS://192.168.1.2](https://192.168.1.2)

You will see the Mitel ICP Login screen. Username is Installer, Password is 1000. Next you will see the Security page and click "Yes". You may see a window asking "Would you like to allow pop-ups from 192.168.1.2 ?" and if so click "Yes". The "Forms" screen should appear. You can use the mouse to point and click on a Form or an Option. On the left side of the screen are drop down menus for CDE and Maintenance. No matter where you are in programming or maintenance, you can click on the drop down menu to a form number or maintenance function and you will jump to that window from your present window. This enables quick programming and changes from one form to another.

A Help button at the top right will give online help for programming CDE and using Maintenance.

Always be sure to click on EXIT at upper right to end the session.